



**SCARAB**<sup>®</sup>  
INTERNATIONAL

WE BUILD EXACTLY WHAT YOU NEED.



MADE IN THE USA

## HISTORY MAKES A DIFFERENCE.

**SCARAB** traces its beginnings back to the early 70's when contacted by a local feedlot to find a means for managing the manure and bedding produced by the feedlot. This gave rise to the first SCARAB composting machine.

Overcoming early obstacles and achieving financial and global marketing success earned founder Marvin Urbanczyk the Small Business Association 1991 Texas Small Business Person of the Year Award. In 2006 the US Composting Council awarded Marvin the Hi Kellogg Award. This award recognizes individuals who have left a lasting, positive impact on the US composting industry.

To fully appreciate SCARAB's machines one really needs to understand its founder's life and personality. Marvin was raised on a farm and after obtaining his degree began his own farming operation. He has worked with large equipment his entire life where he learned through experience how important good equipment is to an operation. So it's no surprise that his vision for SCARAB has always been to build a machine that lasts, is operator proof, doesn't breakdown due to an inadequate understanding of potential stresses placed on a machine, does the job it was designed to do, does it efficiently to minimize fuel cost, and is simple to operate and maintain.

Marvin is a perfectionist who won't cut corners to squeeze additional profit from machine sales, who has no patience for hype or features that add no value and who is obsessed with what is practical, not what sounds or looks good. He's a hands on builder who insists that SCARAB be responsible for every step – from design to assembly. To this day his office is the one closest to the plant.

Over forty years and countless innovations later **SCARAB** is the world's leading manufacturer of self-propelled windrow turners with machines throughout the US and in 19 other countries. Today's innovations make SCARAB a leader in fuel efficiency, production capacity, reliability, and low operating costs.



## SO DO OUR CUSTOMERS.

*"Just a few words to tell you how pleased our company is with the SCARAB machine. It is hard to describe in words how well the SCARAB performs. It has been almost maintenance free with the exception of flails, which have nothing to do with performance. The belt drive offers much more power to the drum than the hydraulic system we previously had. The service has been impeccable and I would recommend the SCARAB over any other machine."*

Dean Stallings, Hockey Express Compost

*"I have been using SCARAB compost machines for the last 17 years. I process approximately 200 tons of material per day. The SCARAB has proved to be of the utmost reliability, and my business depends on its reliability. American made with American parts, along with a great parts manager, well, it doesn't get any better than that."*

Howard Hale, Wholearth Organic Composting

*"We started making compost in 1984 using dairy manure as our raw material. We also compost a lot of cotton gin waste and some winery waste for special customers. About 15 years later, we bought our second SCARAB and in 2011 we bought our third SCARAB. Our SCARABs have served us well. Cains Trucking makes between 75,000-100,000 tons of compost per year, so they get a good workout"*

Butch Gimlin, Cains Trucking

*"We value our SCARAB purchases due to the parts availability and the willingness of the SCARAB team to make sure our machine has the most uptime that is possible. Our two 18' SCARAB turners make Harvest Blend happen! We value SCARAB and SCARAB brings value to our Harvest Blend Compost! We operate two 18' machines, a 1992 and a 1997. That might say it all. When you have equipment and use it, you need parts. SCARAB makes sure that is not a problem. With two machines that are 21 and 16 years old, parts availability is important. SCARAB makes sure we get the parts quick to keep our machines running. Britt and the SCARAB team have always been there to answer our questions and get us the right part on time! They keep our turners in the windrow and that brings value! American made machines have a lot of pluses when it comes to local parts availability."*

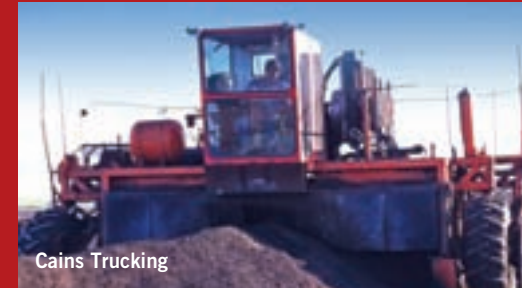
Bob Engel, Engel & Gray, Inc.

*"We have been using the SCARAB windrow turner for about 15 years. We turn compost and also heavy soil blends with our machine with excellent results. We have normal wear on drum and drum parts (flails and hangers) with virtually no trouble with the main body of this machine. On one occasion a new drum was needed and Britt Reid and the SCARAB staff literally stopped what they were doing and made a new drum for our machine. After delivery Britt would contact us several times during the day following up on the installation and set up of the new drum almost as if he was right there helping us get the machine up and going as soon as possible. We have worked closely with these people over the years and have always felt like when we call them we are talking to a friend who has our best interest in mind. Thanks Britt and SCARAB International!"*

Texas Disposal Systems



Hockey Express Compost



Cains Trucking



Engel & Gray, Inc.



Texas Disposal Systems



AMERICAN ENGINEERED, BUILT TO LAST.

BELT DRIVEN OR HYDRAULIC  
DRIVEN DRUM

CHOICE OF CAT, CUMMINS OR  
JOHN DEERE ENGINE

SCARAB

CHOICE OF AUGER STYLE OR  
AGGRESSIVE FLAILED DRUM

CHOICE OF TRACK OR WHEEL DRIVE



OPEN ACCESS DESIGN FOR  
EASY MAINTENANCE

INDEPENDENT SUSPENSION

RUBBER LINED TUNNEL

## LOWEST TOTAL COST OF OWNERSHIP IS THE SCARAB DIFFERENCE.

- **Belt driven drums provide unmatched productivity and fuel efficiency.** SCARAB is the industry leader for both hydraulic and belt driven drums. Belt driven drums deliver about 50% more of the available horsepower to the drum than hydraulic models. This translates into lower fuel consumption and less time in the windrow means lower labor costs. For larger composters these savings can exceed the cost of the turner in less than 10 years.
- **Oversized components:** SCARAB's reputation for reliability and longevity can be traced to one thing.....oversized components. If you want to be certain about your choice of turners simply compare the size of our radiators, engines, drive systems, suspensions, hydraulic systems, and final drive motors to any other model...then decide.
- **Local parts and service:** our vast dealer network means you won't be waiting weeks for a repair and one day shipment is available on most parts. Many parts are available through local merchants.
- **Design flexibility reduces your total operating costs:** our largest model can significantly reduce your cover and pad cost, our pad-saver option maximizes the material on your pad, and our D5 tracks insure traction in the most challenging conditions.
- **With more design options than any other manufacturer and over 40 years of experience built into every machine,** SCARAB continuously tests ways to improve machine performance and support evolving needs of composters.

WE BUILD EXACTLY WHAT YOU NEED.



MADE IN THE USA

[scarabmfg.com](http://scarabmfg.com)

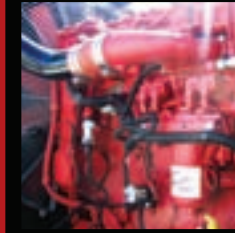
## WE BUILD EXACTLY WHAT YOU NEED.

At SCARAB there is no such thing as a standard model. Drawing from an extensive choice of turner configurations, proven components and available options, each machine is built specifically for the customer's needs. Our staff and dealers will help you optimize the turner design required for your pad composition, feedstock(s), volume of material and other considerations like use of windrow covers, desire to maximize the amount of material on your pad, indoor operation, etc.

### DIESEL ENGINES



CATERPILLAR



CUMMINS



JOHN DEERE

TIER III ENGINES - vary in power from 80-700 HP  
higher horsepower available

### DRUMS



AUGER



FLAIL

AUGER - aerates and fluffs material  
FLAIL - chopping drum quickly breaks particle size down

### DRUM DRIVE



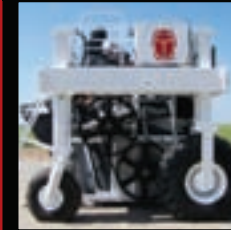
BELT DRIVEN



HYDRAULIC

BELT DRIVEN - 98% efficient  
HYDRAULIC - variable speed drum and torque

### DRIVE



TIRE



TRACK

TIRE - dry climate or improved site  
TRACK - muddy conditions, uneven terrain, unimproved sites

### OVERSIZED COMPONENTS



RADIATOR



TORQUE HUBS



CLUTCH

Oversized radiator, torque hubs and clutch are built for longevity of machine

### CAB



PANORAMIC CAB

CAB sits directly over windrow

### TOW BEHIND



ECONOMICAL

TOW BEHIND model is an economical option for smaller volumes



## MODEL AND DIMENSIONS

FRAME	6'	8'	10'	12'	14'	16'X7'	16'X8'	18'X7'	18'X8'	20'X7'	20'X8'	22'X7'	22'X8'	24'X7'	24'X8'	24'X10'	27'X11'
<b>TRACK DRIVE</b>																	
Case 450A 12" or 14"	X	X	X	X	X	X	X	X	X	X	X	X	X	X	X	X	X
D4 24"					X	X	X	X	X	X	X	X	X	X	X	X	X
D5 30"					X	X	X	X	X	X	X	X	X	X	X	X	X
Half Tracks Case 450's					X	X	X	X	X	X	X	X	X	X	X	X	X
<b>WHEEL DRIVES</b>																	
2WD	X	X	X	X	X	X	X	X	X	X	X	X	X	X	X	X	X
4WD X			X	X	X	X	X	X	X	X	X	X	X	X	X	X	X
Transverse Configuration	X	X	X	X	X	X	X	X	X	X	X	X	X	X	X	X	X
<b>STANDARD FLAIL DRUM SIZES</b>																	
24" OD	X	X															
28" OD			X	X													
32" OD			X	X	X	X	X	X	X	X	X	X		X			
48" OD							X		X		X		X		X		
66" OD																X	X
<b>AUGER STYLE FLAIL SIZES</b>																	
24" OD	X	X	X	X													
28" OD	X	X	X	X													
32" OD			X	X	X	X		X	X	X		X		X			
48" OD					X	X	X	X	X	X	X	X	X	X	X	X	X
66" OD																X	X
<b>HORSEPOWER</b>																	
80HP	X																
100HP	X	X															
190HP			X														
250HP				X	X												
300HP				X	X	X											
325HP				X	X	X											
385HP				X	X	X	X	X	X	X							
400HP				X	X	X	X	X	X	X							
440HP				X	X	X	X	X	X	X	X						
475HP				X	X	X	X	X	X	X	X	X	X				
520HP					X	X	X	X	X	X	X	X	X	X	X	X	X
540HP					X	X	X	X	X	X	X	X	X	X	X	X	X
630HP							X	X	X	X	X	X	X	X	X	X	X
700HP																	X
<b>DRUM</b>																	
Hydraulic Drum Drive	X	X	X	X	X	X	X	X	X	X	X	X	X	X	X	X	X
Belt Drive Drum					X	X	X	X	X	X	X	X	X	X	X	X	X
Variable Drum Control	X	X	X	X	X	X	X	X	X	X	X	X	X	X	X	X	X
Legal Load Units					X	X		X									
<b>SIZES</b>																	
Tunnel Width	6'	8'	10'	12'	14'	16'	16'	18'	18'	20'	20'	22'	22'	24'	24'	24'	27'
Tunnel Height	4'	4'	5'	5'6"	6'7"	7'	8'	7'	8'	7'	8'	7'	8'	7'	8'	10'	11'
Fuel Capacity US Gal	55	55	75	75/150	225	225	225	225	225	225	225	225	225	225	225	225	225
Min Operating Height	9'8"	9'8"	10'6"	10'6"	11'10"	12'5"	13'5"	12'5"	13'5"	12'5"	13'5"	12'5"	13'5"	12'5"	13'5"	15'5"	15'5"
Max Operating Height	10'8"	10'8"	11'6"	11'6"	12'10"	13'5"	14'5"	13'5"	14'5"	13'5"	14'5"	13'5"	14'5"	13'5"	14'5"	16'5"	18'2"
Cubic Yards/Linear Ft	0.44	0.59	0.93	1.3	1.78	2.33	2.37	2.85	2.96	3.37	3.56	3.89	4.15	4.41	4.74	5.19	6.52
12 Volt Electric System	X	X	X	X	X												
12/24 Volt Start					X	X	X	X	X	X	X	X	X	X	X	X	X
Amperage	62	62	62	62/90	62/90	90	90	90	90	90	90	90	90	90	90	90	90



**SCARAB**<sup>®</sup>  
INTERNATIONAL

**1475 County Road W  
White Deer, TX 79097 · USA  
(806) 883-7621 · fax: (806) 883-6804**

***scarabmfg.com***

**BUILT FOR CUSTOMER SUCCESS**

We are in it for the future—for our customers and for our world.

Australia . Canada . China . Ecuador . Egypt . England . Israel . Italy  
Malaysia . Mexico . New Zealand . Oman . Russia . Saudi Arabia  
Singapore . Sweden . Taiwan . United Arab Emirates . United States



**AMERICAN ENGINEERED, BUILT TO LAST.**

MADE IN THE USA